

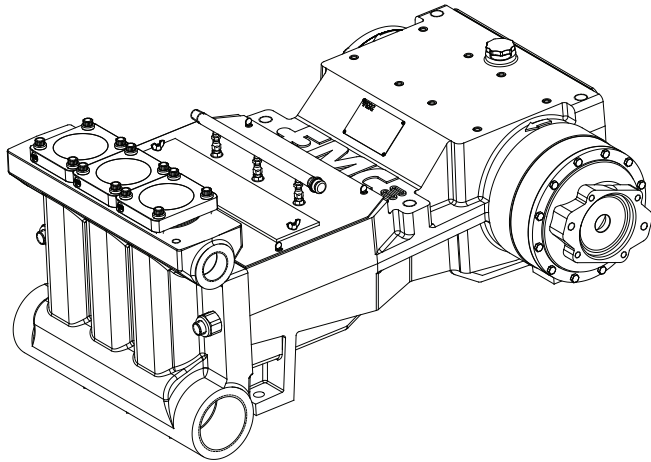


Model M13-HDD

102 BHP Continuous Duty Rated (131 BHP Intermittent)

**We put you first.
And keep you ahead.**

Standard Cast ISO Drawing



Specifications

Model M13-HDD	
Configuration	Horizontal Triplex Plunger
Stroke Length	3.25 Inches
Frame Load Rating	9,620 Lbs.
Pump Weight (Average)	1,150 Lbs.
Intermittent Duty Speed Rating	500 RPM
Continuous Duty Speed Rating	387 RPM
Minimum Speed *	100 RPM
Mechanical Efficiency	90%
Lubrication System (Standard)	Splash, Gravity Return
Lubrication System (Optional)	Pressurized, Motor or Belt Driven
Lube Oil Capacity	3.75 Gallons
Lube Oil Type	SAE 30
Maximum Fluid Temperature	200°F (300°F Capability)
Minium Fluid Temperature	-20°F (-50°F Capability)
Hydraulic Motor Mount **	SAE C 4-Bolt with 1½" - 17 T
* Slower RPM can be achieved with the addition of a pressurized lubrication system.	
** Direct mount Gear Reducer available upon request.	

Standard Fluid End Materials Available:

- » Ductile Iron
- » Carbon Steel
- » Stainless Steel
- » Nickel Aluminum Bronze
- » *Other alloys per request*

Pump Model	Plunger Diameter (in)	Displacement (GAL/REV)	Maximum Pressure (PSI)	Pump Capacity (GPM) @ Input Speed (RPM)									
				100 RPM	150 RPM	200 RPM	250 RPM	300 RPM	350 RPM	387 RPM	400 RPM	450 RPM	500 RPM
M1320-HDD	2.500	0.2072	1,960	20.7	31.1	41.4	51.8	62.2	72.5	80.2	82.9	93.2	103.6
M1322-HDD	2.750	0.2507	1,620	25.1	37.6	50.1	62.7	75.2	87.7	97.0	100.3	112.8	125.4
M1324-HDD	3.000	0.2983	1,360	29.8	44.8	59.7	74.6	89.5	104.4	115.5	119.3	134.3	149.2
M1326-HDD	3.250	0.3501	1,160	35.0	52.5	70.0	87.5	105.0	122.5	135.5	140.0	157.6	175.1
M1328-HDD	3.500	0.4061	1,000	40.6	60.9	81.2	101.5	121.8	142.1	157.2	162.4	182.7	203.0

- » Horsepower based on 90% mechanical efficiency of pump. Actual application horsepower requirements can be calculated using the equation: $BHP = (GPM * PSI) / (1714 * 0.90)$
- » Consult FMC Technologies for any application where inlet pressures will exceed 10% of rated discharge pressure.
- » Pump capacities shown are based on 100% volumetric efficiency.
- » Dimensions shown are for general sizing purposes and should not be used for construction.
- » FMC Technologies reserves the right to modify this information without prior notice.

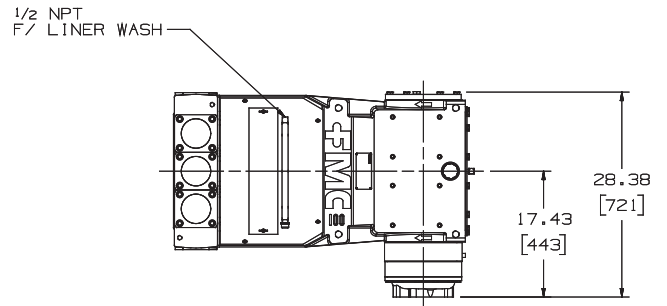
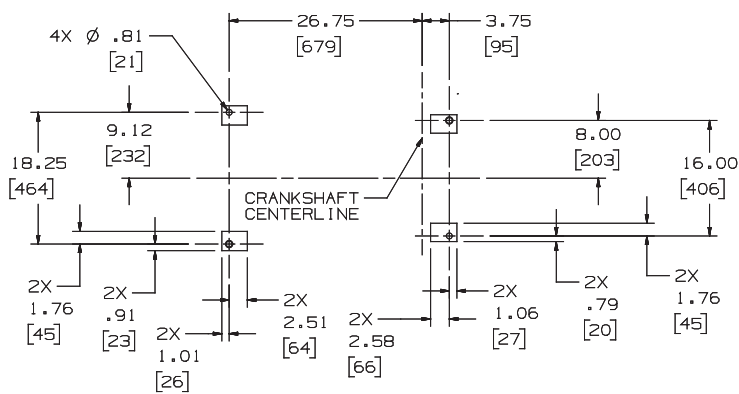


Model M13-HDD

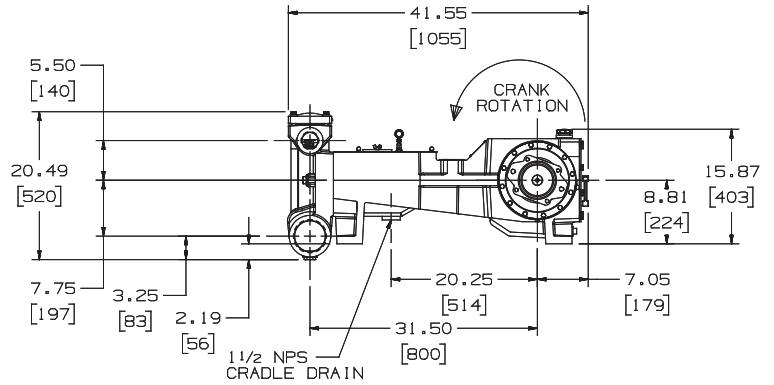
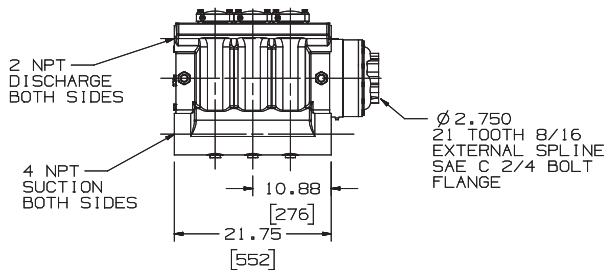
102 BHP Continuous Duty Rated (131 BHP Intermittent)

**We put you first.
And keep you ahead.**

Forged Pump Engineering Dimensional Outline



FOOT PRINT & MOUNTING DETAIL



Standard Port Sizes

Pump Model	Discharge (in)	Suction (in)
M1320 – M1322	2"	3"
M1324 – M1328	2"	4"